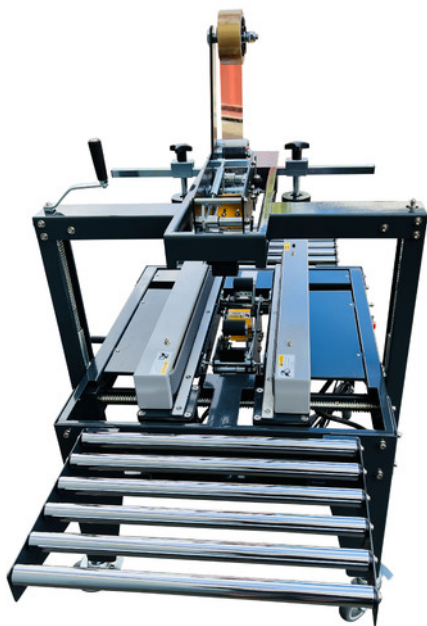


SEMI-AUTOMATIC CARTON SEALING MACHINE

GPCS-C26U

OPERATION MANUAL



1. GENERAL

1.1 Notice of installation	2
1.2 Notice of operation	2

2. SPECIFICATION

2.1 Spec. table.	3
2.2 Machine dimension.	4
2.3 Machine description.	5

3. OPERATION DESCRIPTION

3.1 Installation	6
3.2 Operation of control panel	8

4.COUNTER INSTRUCTION 9

5.ELECTRIC

5.1 Electric capacity	10
5.2 Electric diagram	11

6.TROUBLE SHOOTING

6.1 Belt adjustment.	15
6.2 Fuse replacement	15

7.PARTS LIST

7.1 Side belt	16
7.2 Column.	19
7.3 Machine body	21

1. GENERAL

1.1 Notice of installation

To make sure of a safe and correct operation, please check the below items before installing the machine:

- 1) Power source capacity must be larger than the machine need.
- 2) A shorter ground wire is better.
- 3) Machine standard power is 110V/230V (-15% - +10%).
- 4) Machine standard power Hertz is 50/60 Hz. ($\pm 2\%$)
- 5) Machine is good between temperatures 0°C - 45°C .
- 6) Any thing/substance around the machine should not produce loud noise and vibration.

1.2 Notice of operation

To have good protection for the operator, please make sure of the following conditions:

- 1) Before operating, please read the machine manual carefully.
- 2) Make sure no good have been put on the power cable.
- 3) Make sure no goods been have put on the upper tape head unit.
- 4) Don't allow damp parts or water to touch the electric parts.

2. SPECIFICATION

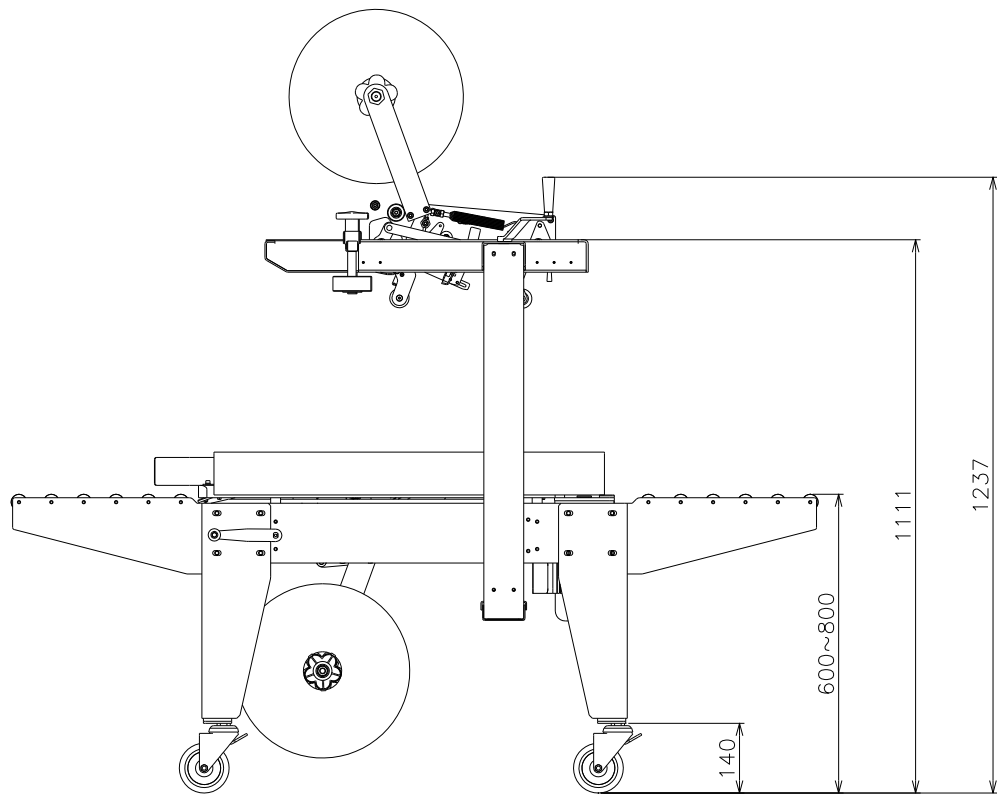
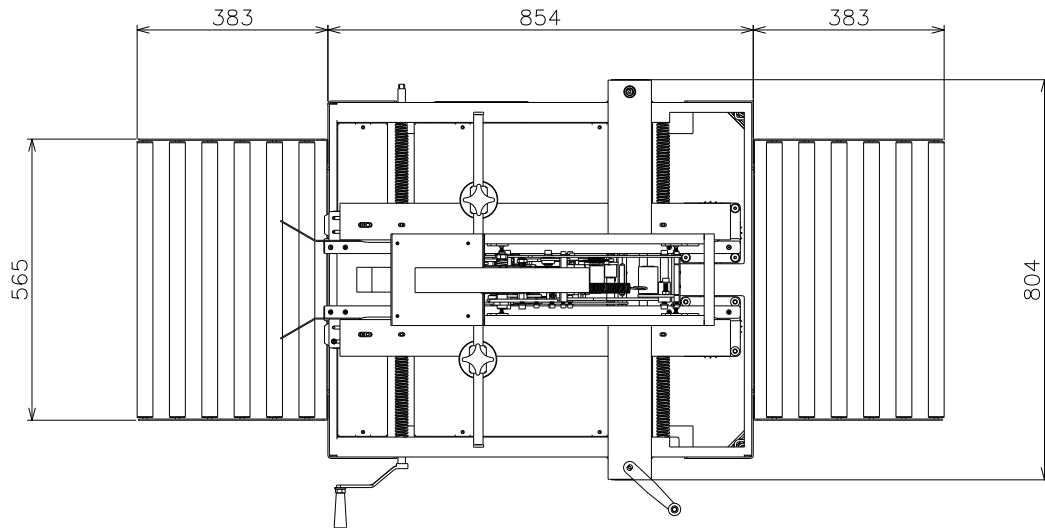
2.1 Spec. table

model	TMD-C26U
Tape	50mm(2")
Belt speed	20m/min
Capacity	(L)150mm~unlimited (W)150mm~500mm (H)120mm~500mm
Consumption	450W
Machine size	1620mm(L)x804mm(W)x1237mm(H)
Sound level	60dB
Machine net weight	131KG

Standard option:

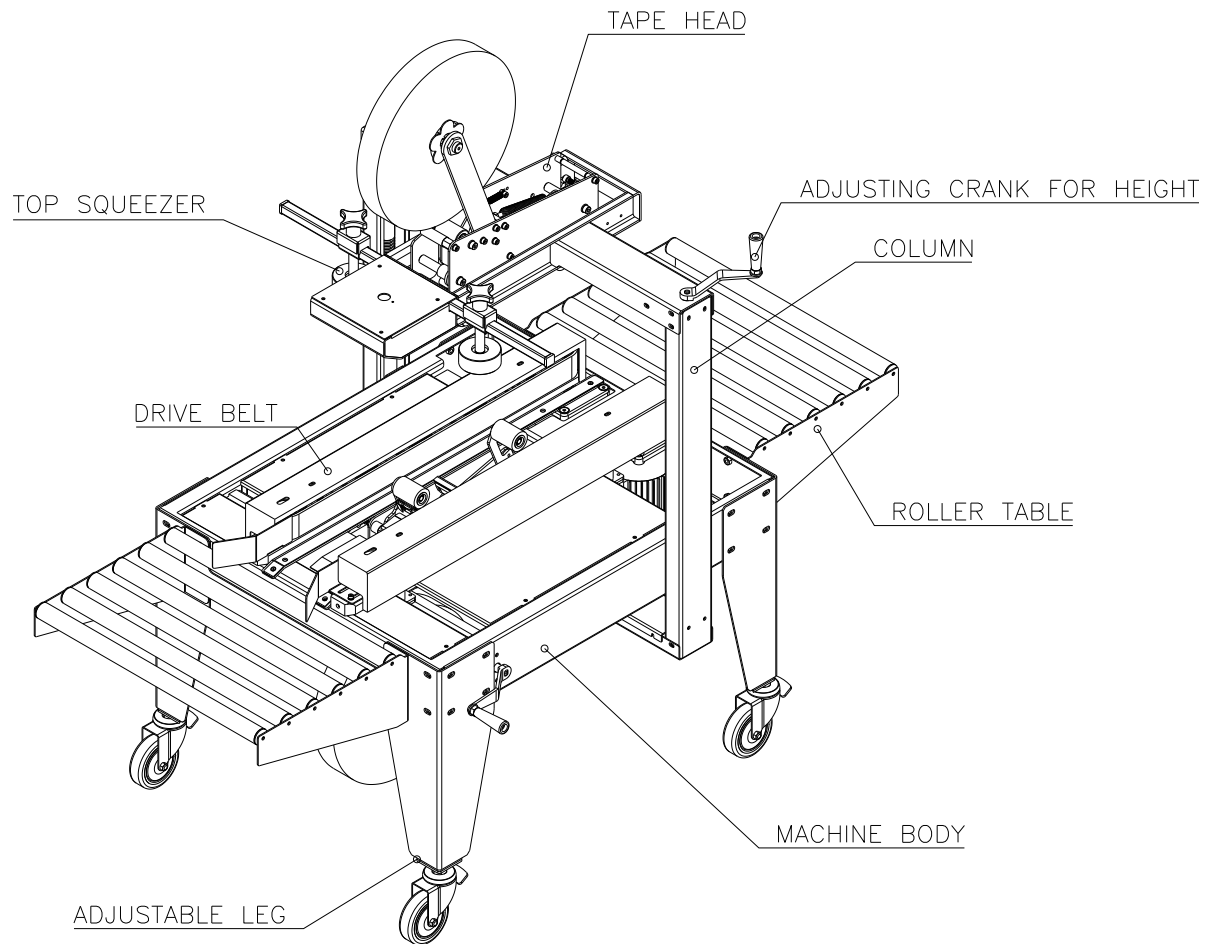
- 3" tape head

2.2 Machine dimension



TMD-C26U

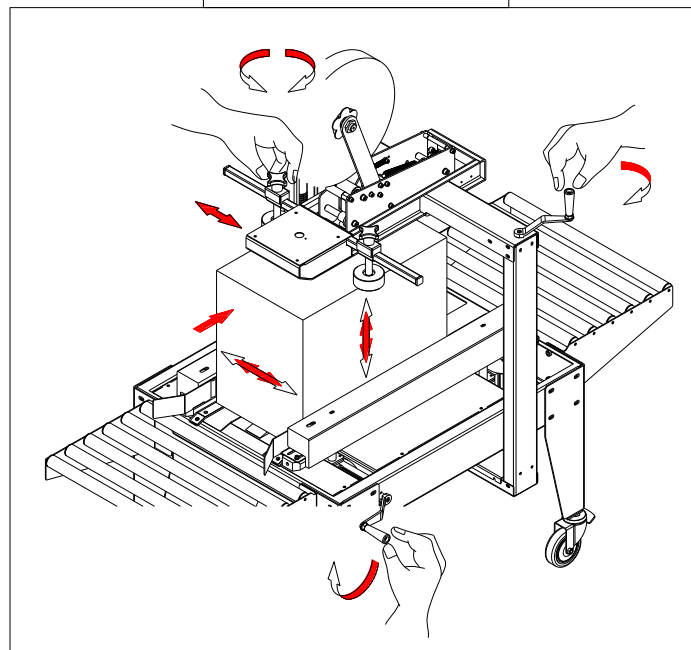
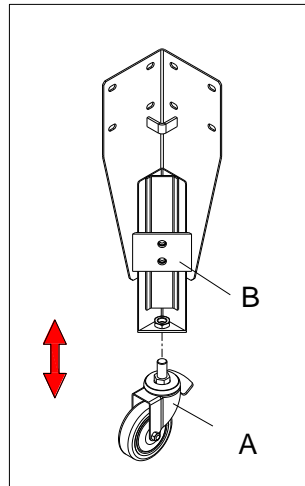
2.3 Machine description



3. OPERATION DESCRIPTION

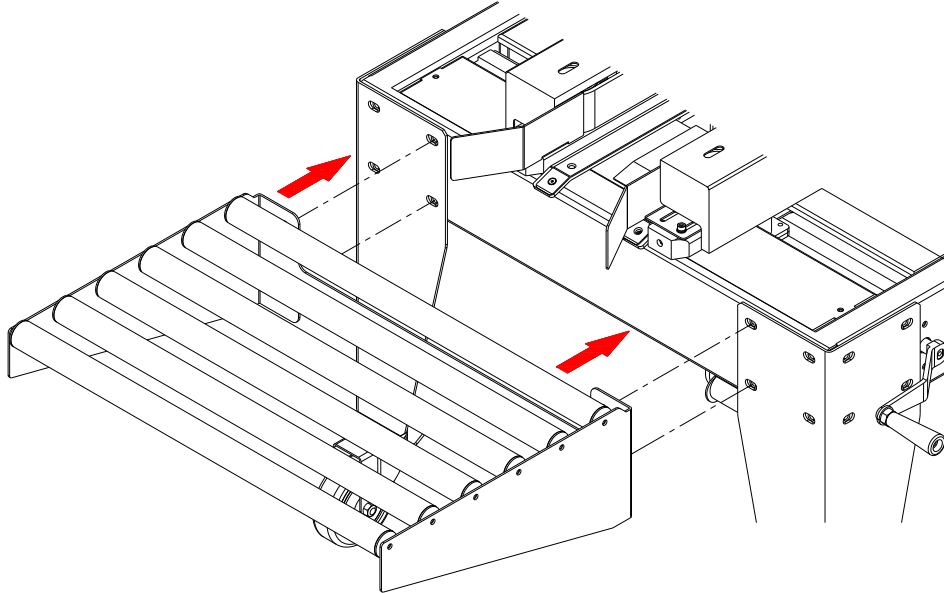
3.1 Installation

- 1) Open the box. Please remove carefully to avoid damaging the machine.
- 2) Lift the machine to install casters (4 wheels), at the same time tighten the A nut to fix the casters in place.
- 3) Set the machine to the desired height, then tighten the B screw.



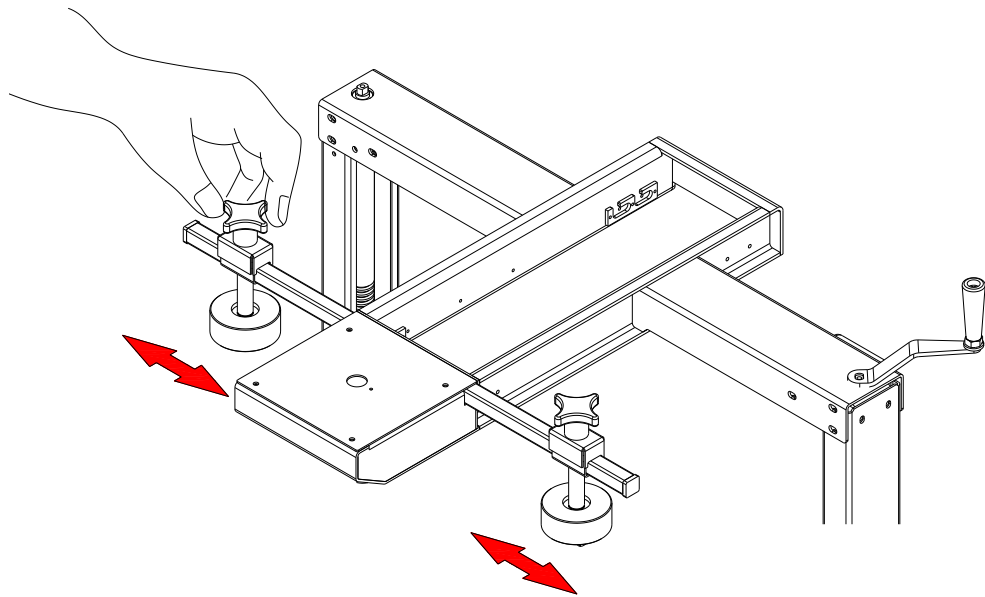
4) Set up the machine and relocate to the desired place.

5) Attach the roller table to the machine body.



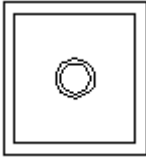
6) Load the tape head with tape. (Please refer to the tape head instruction manual.)

- 7) Place a box filled with product on the in feed conveyor, position on the side drive belts and top section to accommodate the desired box width and height by using the width and height adjustment crank. Follow by adjusting the tow handle knobs against the sides of carton to secure the carton's center.

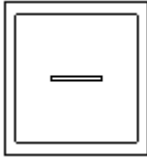


- 8) Connect the power cable with the socket to an 110V/230V power source.
- 9) Plug in, press "start" button for testing.

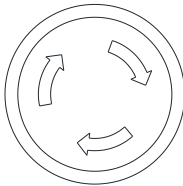
3.2 OPERATION OF CONTROL PANEL



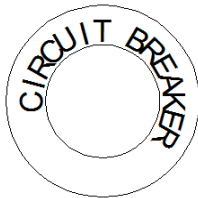
Press to stop motors and belts.



Press to start motors and belts.



Emergency stop



Circuit Breaker:

- When overload, circuit breaker will be activated.
- Press the button to reset the machine.
- Or it will reset automatically after 60 seconds.

4. COUNTER INSTRUCTION

1. It is forbidden to cancel, disassemble, modify or not respect the implemented safety measures. In that case, the manufacturer will not be hold responsible for any possible damage caused.
2. Do not use the machine in a place where water and oil might splash
3. Use only the specified power supply cable
4. Do not pull the power supply cable to move the machine. It will damage or break the cord
5. Do not use the machine in any way which is not specified in this manual
7. It is forbidden to exceed the limits of use and operation on what regards weights and sizes of loads.
8. It is forbidden to use the machine with unstable loads which show hazard of falling.

5. ELECTRIC

5.1 Electric capacity

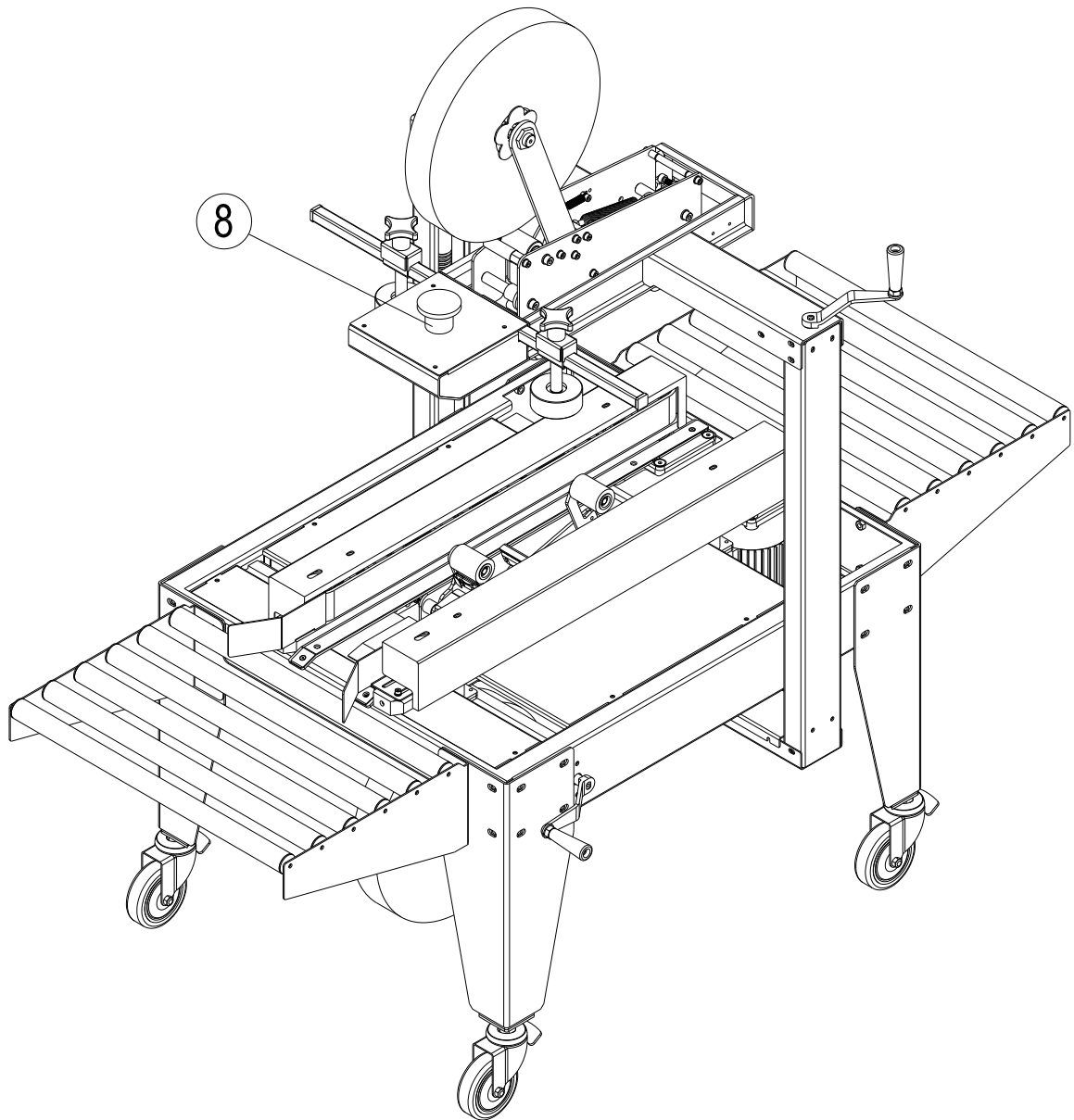
1) Power consumption

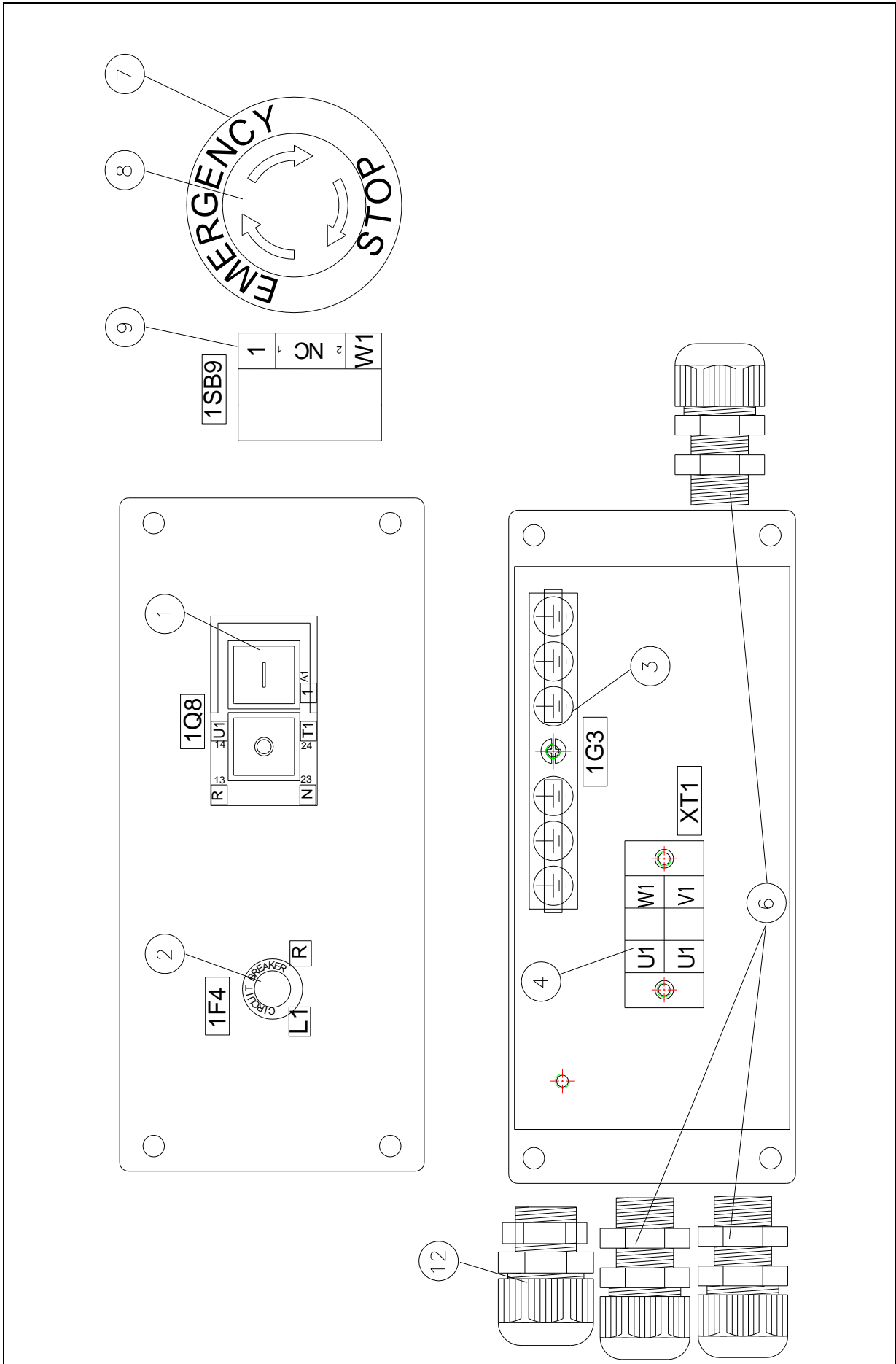
Belt motor	0.18*2KVA
Machine power consumption	0.4KVA
Power socket requirement	0.5KVA

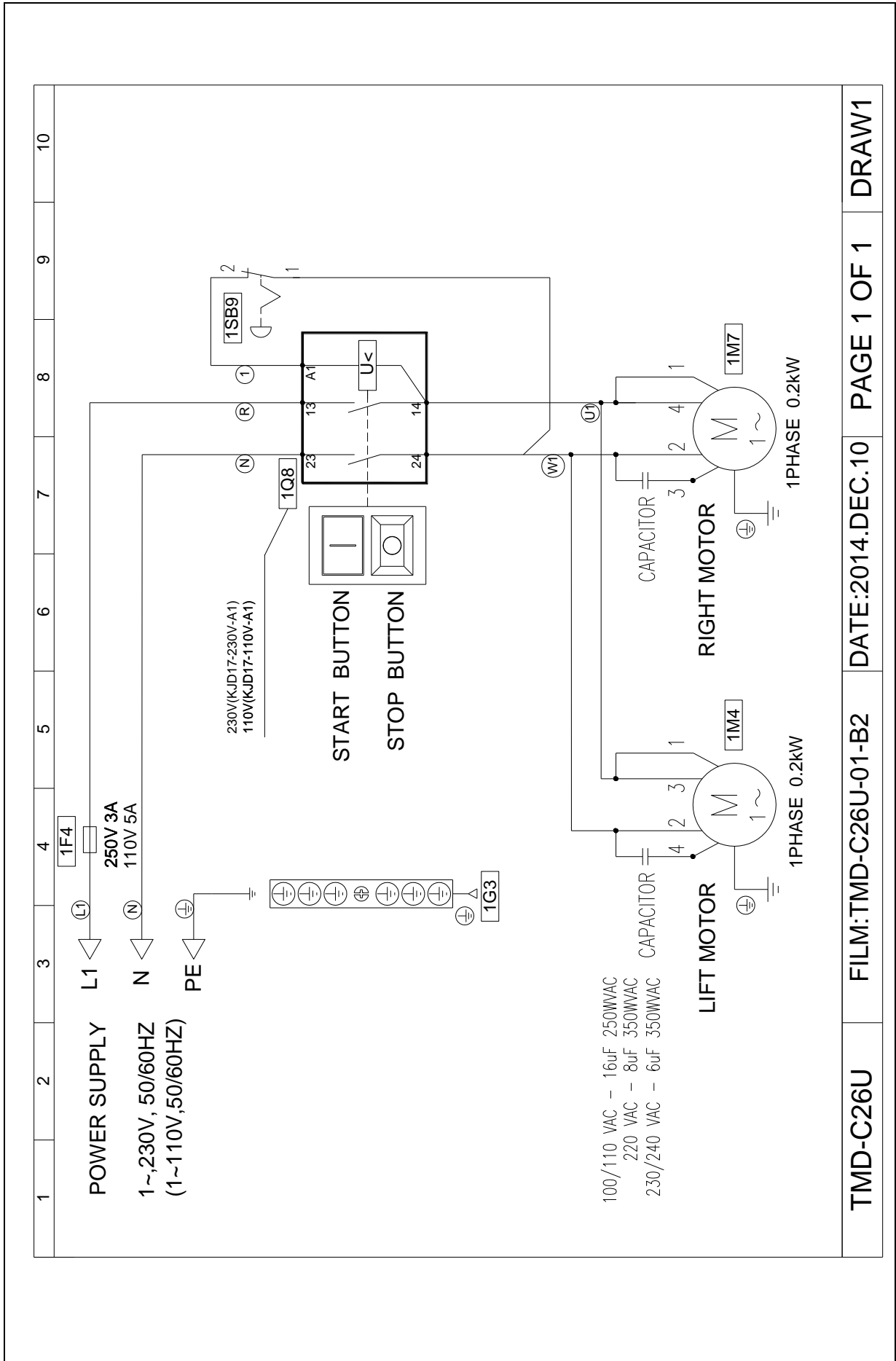
2) Power cable. 1.25mm²

3) Machine input. AC 110V/2230V 1-Phase

5.2 Electric diagram







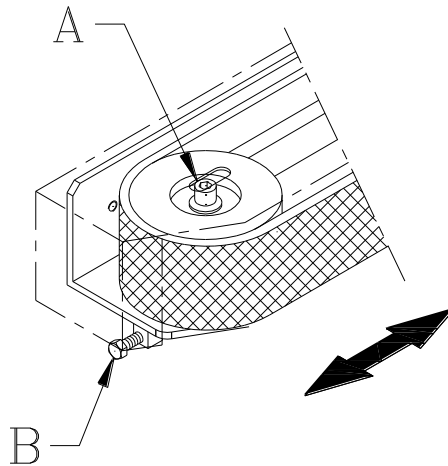
ELECTRIC PARTS LIST FOR TMD-C26U

KEY NO	PART NO.	DESCRIPTION	QTY
1	P0302-010003500	SWITCH BOX (220~240V)	1
	P0302-010003600	SWITCH BOX (120V)	1
2	KA02002900	Thermal Circuit Breaker KMB-3I(220V)	1
	P0305-030005600	Thermal Circuit Breaker KMB-5I(110V)	1
3	70560601	TERMINAL BLOCKS TB6P	1
4	P0304-010003900	TERMINAL BLOCKS TB15-3	1
6	P0316-010000210	WIRE HOLDER, MG16A-10SG	3
7	KA0900160	EMERGENCY STOP LABEL	1
8	7155BC20	EMG. SWITCH	1
9	7158BZ12	BUTTON SEAT CONTACTOR NCx1	1
12	P0401-0012900	WIRE HOLDER, N-FN17-15B	1

6. TROUBLE SHOOTING

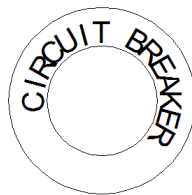
6.1 Belt adjustment

- 1) Loosen the belt screw (A) to adjust the belt to a suitable tension screw (B).



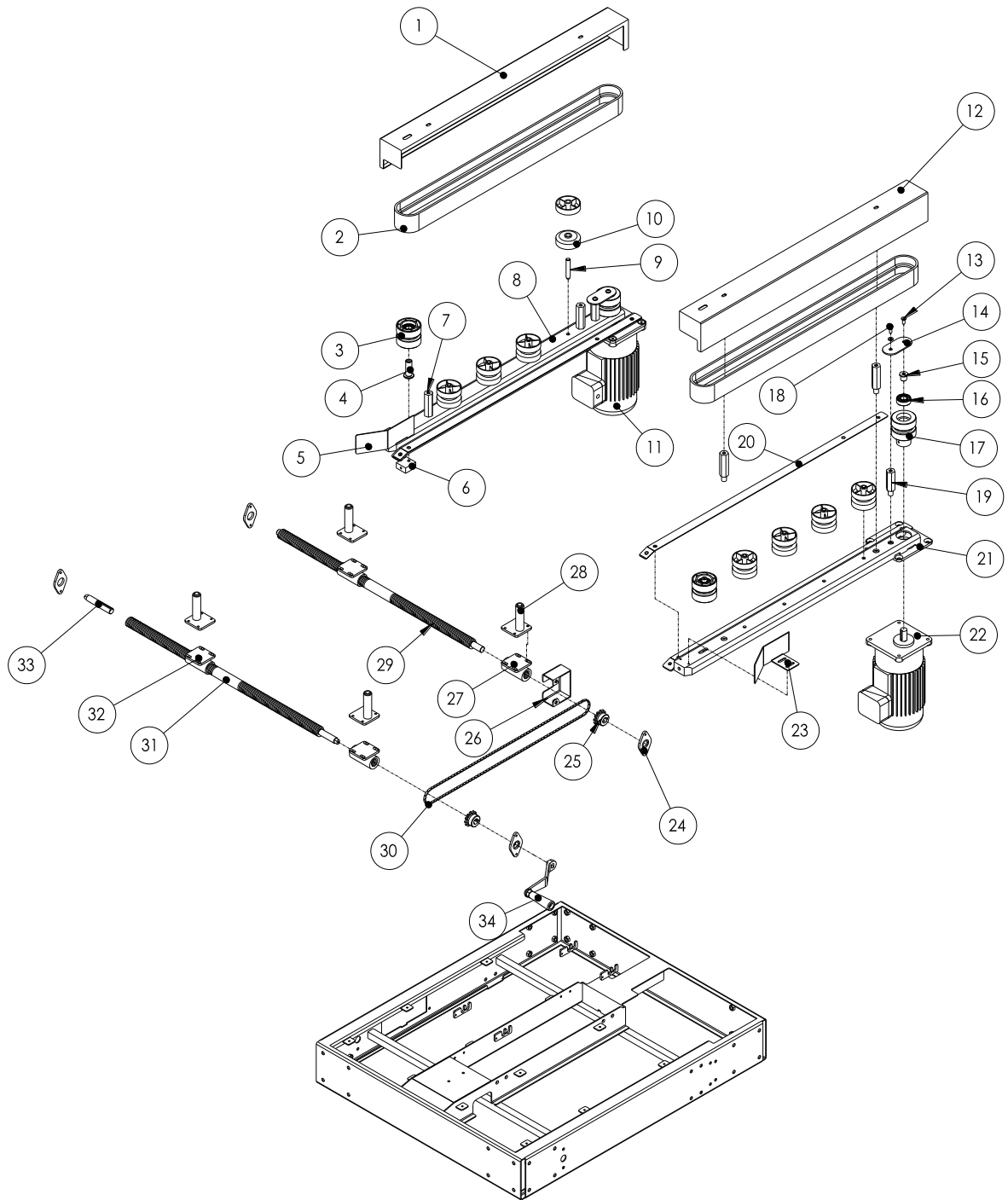
6.2 Fuse Reset

- 1) Symptom: machine will not start to operate.
 - A) Please check the power input.
 - B) Release the E-stop button.
 - C) Press circuit breaker to reset the fuse.
 - D) Press start button to run.



7. PART LIST

7.1 Side belt



PARTS LIST FOR EXC-TMD-C26U

KEY NO	PART NO.	DESCRIPTION	Q'TY
1	P01-042290B	BELT COVER (L)	1
2	P0902-0006700	BELT 50*1550	2
3	P02-0292600	PULLEY FOLLOWER	2
4	P02-028510A	PULLEY SHAFT	2
5	P01-042350A	GUIDE PLATE (L)	1
6	P02-028520A	ADJUSTMENT BLOCK	2
7	P02-0285000	SUPPORT SCREW	4
8	P01-042270B	BELT SEAT(L)	1
9	P02-0284900	ROLLER SHAFT	8
10	P06-003200A	ROLLER 2"	16
11	745122L2	MOTOR,1/4HP, 220V/50HZ,T15:1	1
	745124L2	MOTOR,1/4HP, 240V/50HZ,T15:1	1
	745111L1	MOTOR,1/4HP, 110V/60HZ,T18:1	1
	745122L1	MOTOR,1/4HP, 220V/60HZ,T18:1	1
12	P01-042300B	BELT COVER (R)	1
13	P1101-1606040AZ	SCREW M6x40L	1
14	P01-0440200	CONNECTING PLATE	2
15	P02-0287500	PULLEY DRIVE SHAFT	2
16	210A6202ZZ	BEARING 202ZZ	2
17	P02-028480A	PULLEY DRIVER	2
18	P1101-1606040AZ	SCREW	1
19	P02-0287400	SUPPORT SCREW	2
20	P01-043330B	SLIDING PLATE	2
21	P01-042280B	BELT SEAT (R)	1
22	745122R2	MOTOR,1/4HP, 220V/50HZ,T15:1	1
	745124R2	MOTOR,1/4HP, 240V/50HZ,T15:1	1
	745111R1	MOTOR,1/4HP, 110V/60HZ,T18:1	1
	745122R1	MOTOR,1/4HP, 220V/60HZ,T18:1	1
23	P01-042340A	GUIDE PLATE (R)	1
24	CA302000	SHAFT SEAT	4
25	CA302200	CHAIN SPROCKET	2
26	P01-0433400	SPROCKET COVER	1
27	CA3015R0	SPINDLE SUPPORT	2
28	P02-0284500	SUPPORT SHAFT	4
29	P02-028420A	WIDTH TREADED ROD (REAR)	1
30	P0901-0009900	CHAIN, 35x122	1
31	P02-0284300	WIDTH TREADED ROD (FRONT)	1

S.W:SPRING WASHER

W:WASHER

PARTS LIST FOR EXC-TMD-C26U

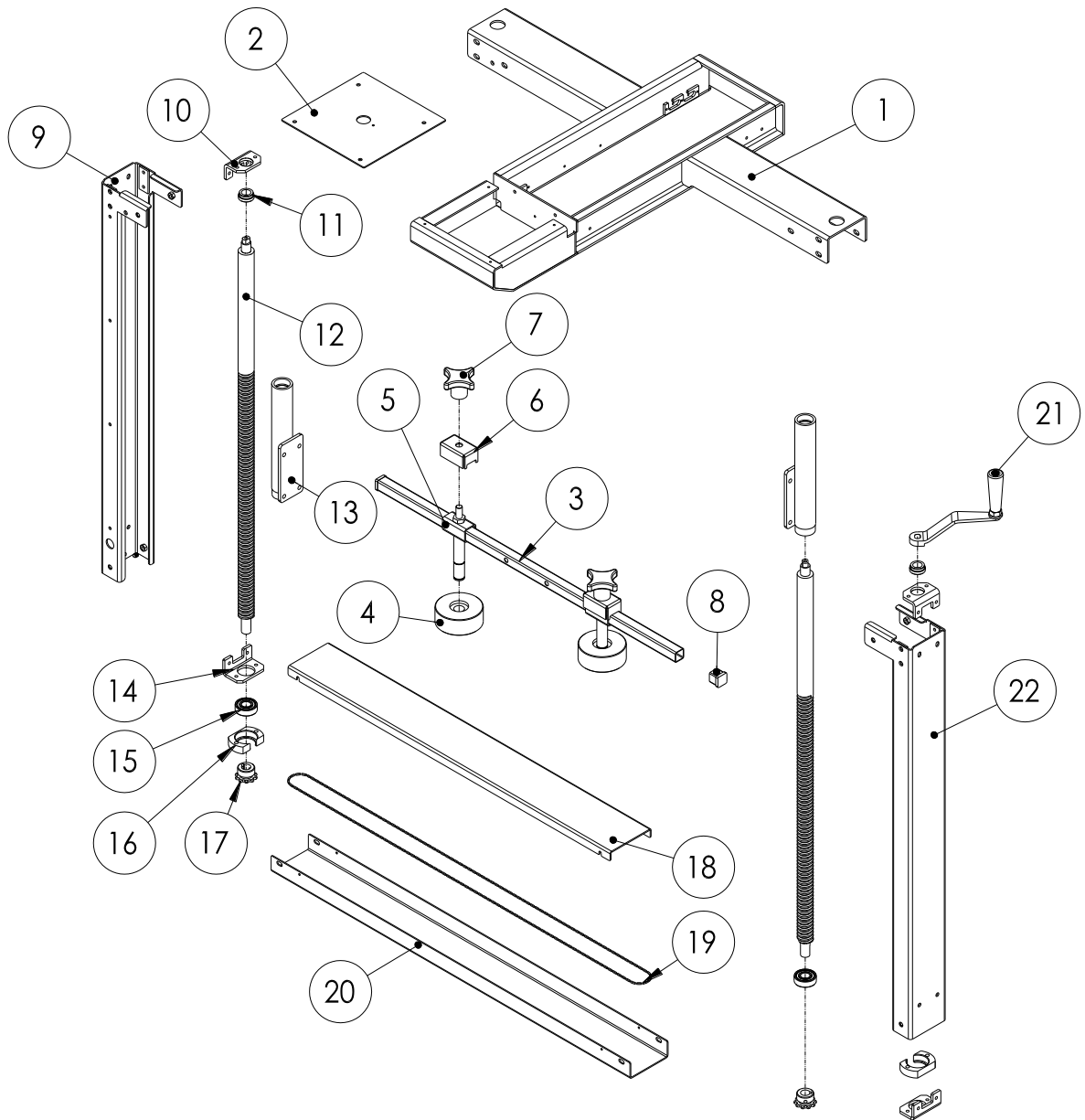
KEY NO	PART NO.	DESCRIPTION	Q'TY
32	CA3015L0	SPINDLE SUPPORT	2
33	P02-0284400	ROD EXTENTION	1
34	P02-0283800	HANDLE CRANK	1

S.W:SPRING WASHER

W:WASHER



7.2 Column



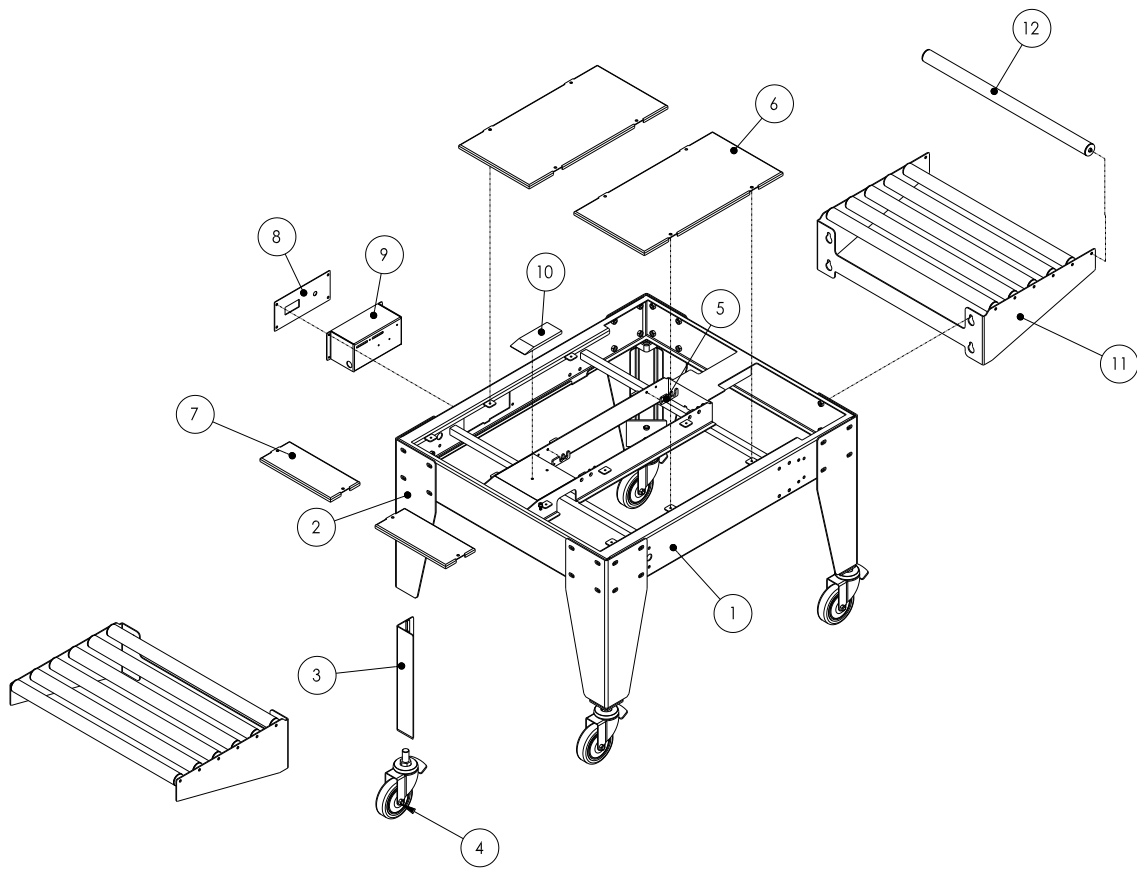
PARTS LIST FOR EXC-TMD-C26U

KEY NO	PART NO.	DESCRIPTION	Q'TY
1	P01-042240C	TOP SEAT FRAME	1
2	P01-044500C	COVER PLATE	1
3	P01-0433700	COMPRESSION ROLLER BAR	1
4	CA100600	COPRESSION ROLLER	2
5	P02-028230A	COMPRESSION ROLLER SEAT	2
6	P01-018470A	FIXING PLATE	2
7	CA101600	KNOB M10x63	2
8	P1114-010001500	TUBE PLUG 20*20	2
9	P01-042231B	COLUMN (L)	1
10	P01-044010A	SPINDLE FIXING PLATE	2
11	CA200200-01	COPPER RING	2
12	P02-028270B	HEIGHT TREADED ROD (L)	2
13	P02-028390A	SPINDLE SUPPORT	2
14	P01-0445300	HEIGHT TREADED ROD (R)	2
15	210A6202ZZ	BEARING 6202ZZ	2
16	CA304500	BEARING SEAT	2
17	CA200800	CHAIN WHEEL	2
18	P01-0422600	TOP CHAIN COVER	1
19	P0901-0010000	CHAIN #35x168	1
20	P01-042250A	BOTTOM CHAIN COVER	1
21	P02-0283800	HANDLE CRANK	1
22	P01-042230B	COLUMN (R)	1

S.W:SPRING WASHER

W:WASHER

7.3 Machine body



PARTS LIST FOR EXC-TMD-C26U

KEY NO	PART NO.	DESCRIPTION	Q'TY
1	P01-042200C	MACHINE FRAME	1
2	P01-042680A	MACHINE LEG	4
3	P01-042690A	ADJUSTABLE LEG	4
4	P1107-0003300	CASTER	4
5	P01-043490A	TAPE HEAD HOLDING PLATE	4
6	P01-042380B	TABLE PLATE (REAR)	2
7	P01-042390B	TABLE PLATE (FRONT)	2
8	P01-042191B	CONTROL PANEL	1
9	P01-042180A	CONTROL BOX	1
10	P06-0046700	SLIDING PLATE	1
11	P01-0435300	ROLLER TABLE	2
12	P08-000750A	ROLLER	12

S.W:SPRING WASHER

W:WASHER